



# S 8028 II

## BASS REFLEX SUBWOOFER



Description	<p>The S8028 II is a very high-output, high power bass reflex subwoofer. The system is equipped with two advanced, hypervented 18" RCF precision woofers mounted in a bass reflex configuration. The cabinet design is optimised to achieve tight and maximised output. Each 18" features massive vented magnets and 4" copper voice coil and represents the state of the art of RCF precision transducers technology. The system is able to produce a Max SPL of 141 dB and handles 3000 Watts AES. The cabinet features two Neutrik Speakon™ connectors in a recessed input plate. A M20 pole mount adaptor is provided on the top of the cabinet.</p>			
Features	<ul style="list-style-type: none"><li>› 2 x 18" high-efficiency 4.0" voice-coil woofer with Inside/Outside Coil Technology</li><li>› 141 dB maximum sound pressure level</li><li>› Response down to 30 Hz</li><li>› System Power rating 3000 Watt RMS</li><li>› M20 standard pole mount in top section of cabinet</li><li>› Baltic Birch cabinet painted with black, heavy duty, textured epoxy</li><li>› Recessed Speakon NL4 Input/Output</li><li>› Protective metal grille, polyester fabric coated</li></ul>			
Part Number	13000391 S 8028 II	4ohm	Black	EAN 8024530010560

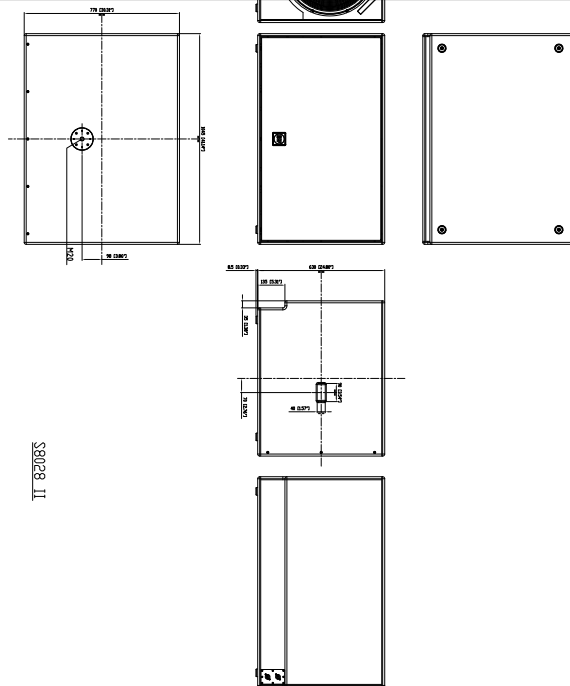


# S 8028 II

## BASS REFLEX SUBWOOFER



Line Art 2D



### TECHNICAL SPECIFICATIONS

Acoustical specifications	Frequency Response (-10dB)	30 Hz ÷ 200 Hz
	Max SPL @ 1m	141 dB
	System Sensitivity	101 dB
Power section	Amplification	Full Range
	Nominal Impedance	4 ohm
	Power Handling	3000 W
	Peak Power Handling	12000 W PEAK
Transducers	Woofer	2 x 18", 4.0" v.c
Input/Output section	Input connectors	Speakon® NL4
	Output connectors	Speakon® NL4
Standard compliance	Safety agency	CE compliant
Physical specifications	Cabinet/Case Material	Baltic birch plywood
	Handles	Integrated hand carry points
	Pole mount/Cap	Yes
	Grille	Metal
	Color	Black
Size	Height	639 mm / 25.16 inches
	Width	1045 mm / 41.14 inches
	Depth	770 mm / 30.31 inches
	Weight	80 kg / 176.37 lbs